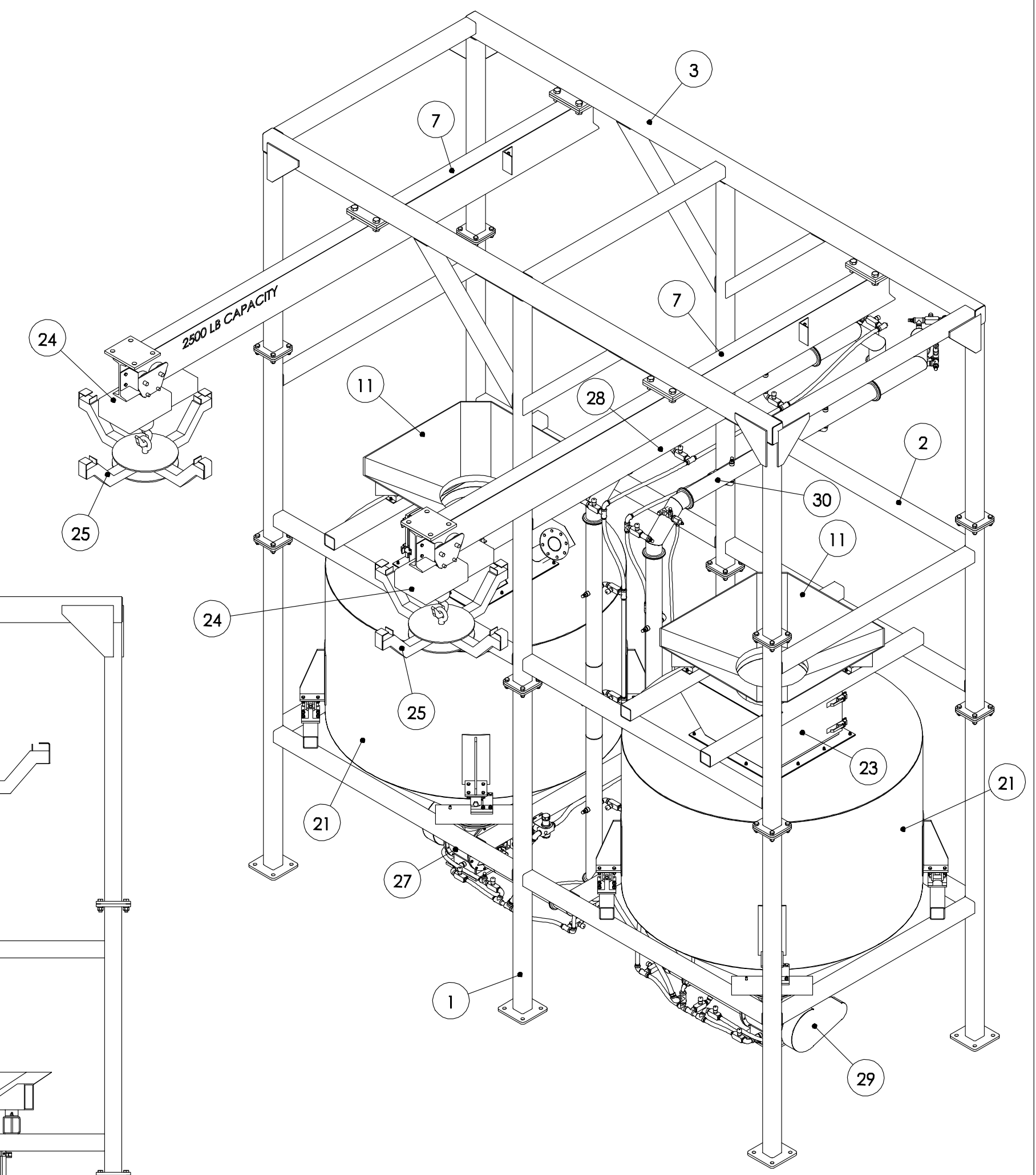
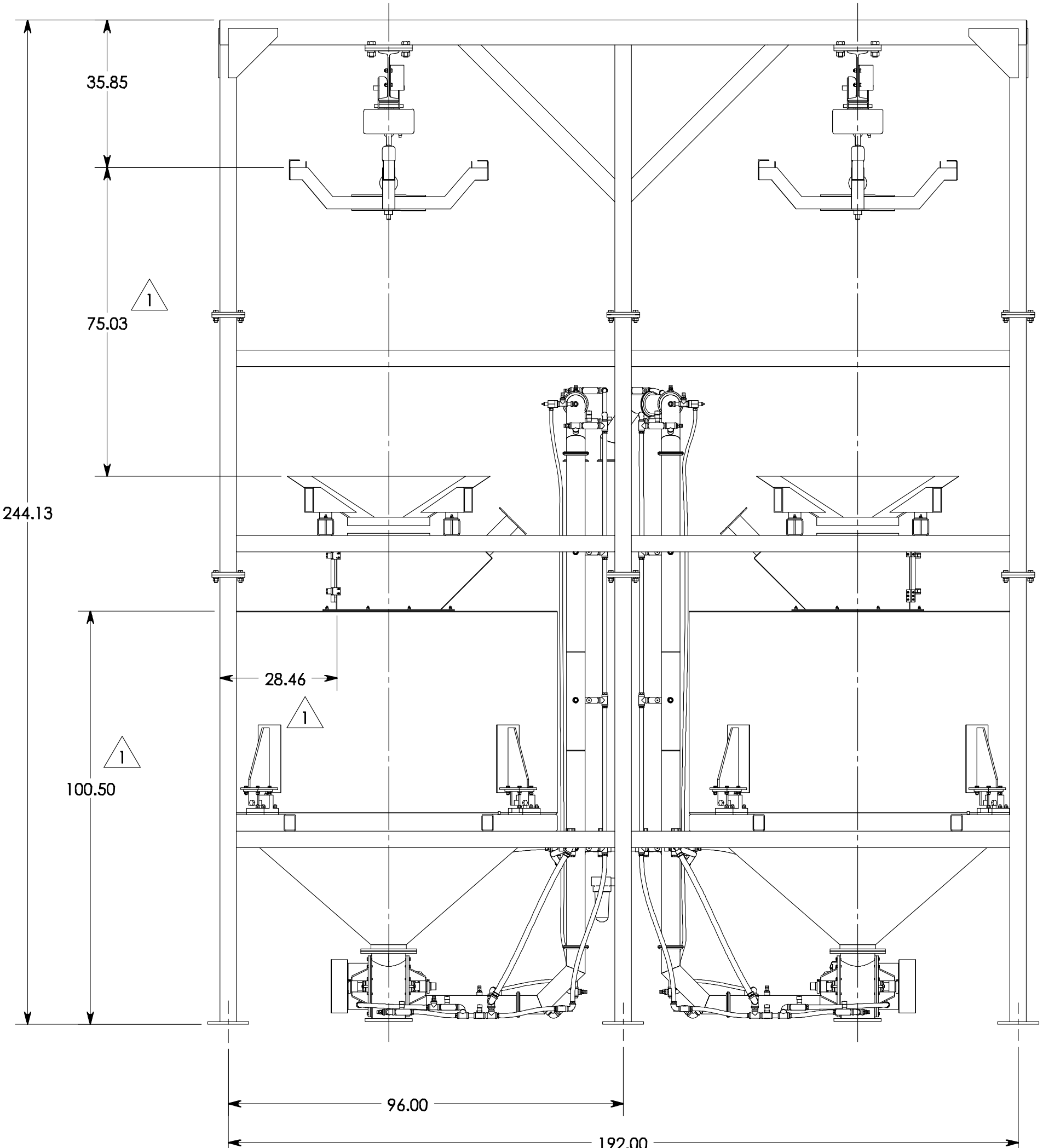
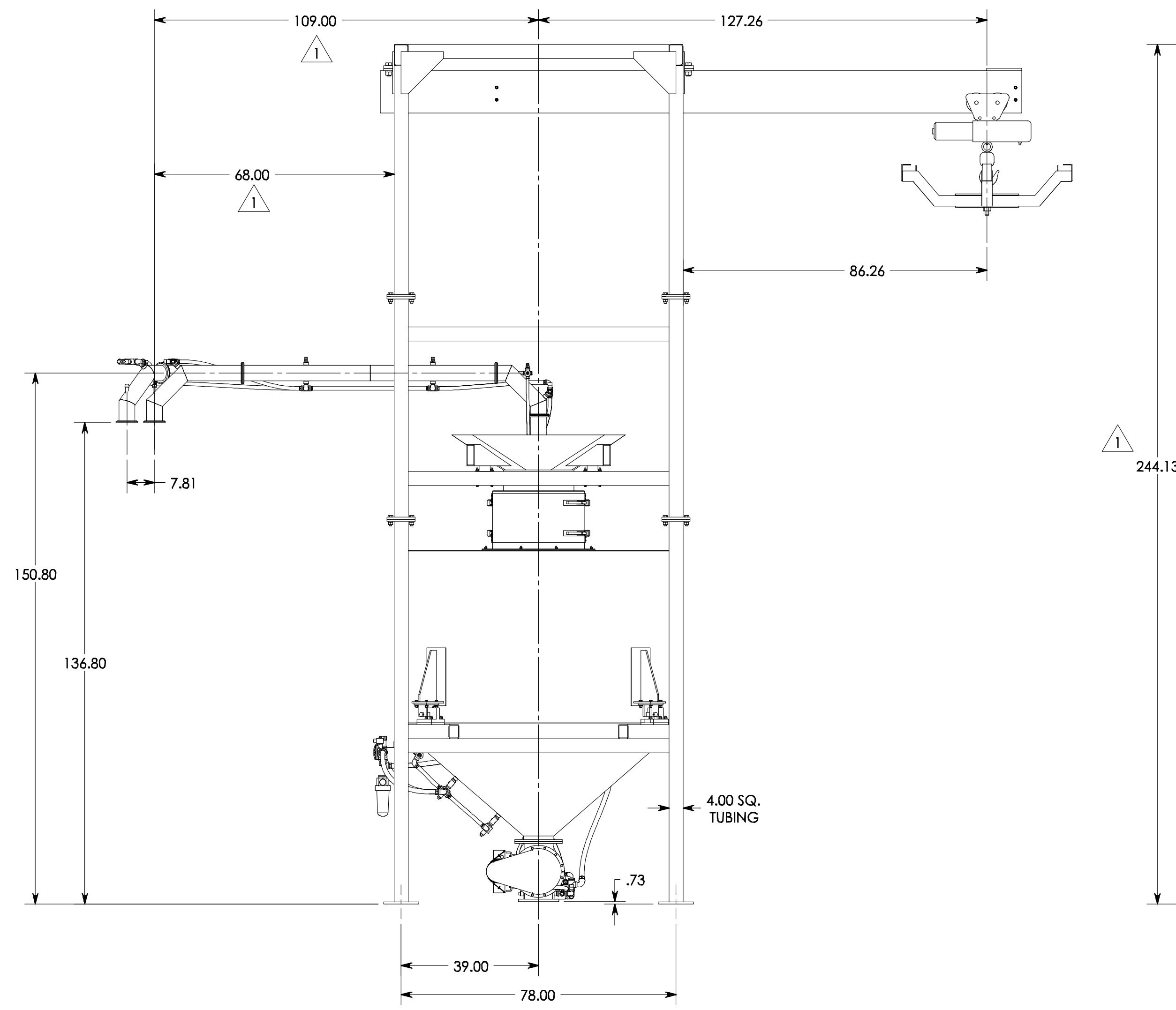
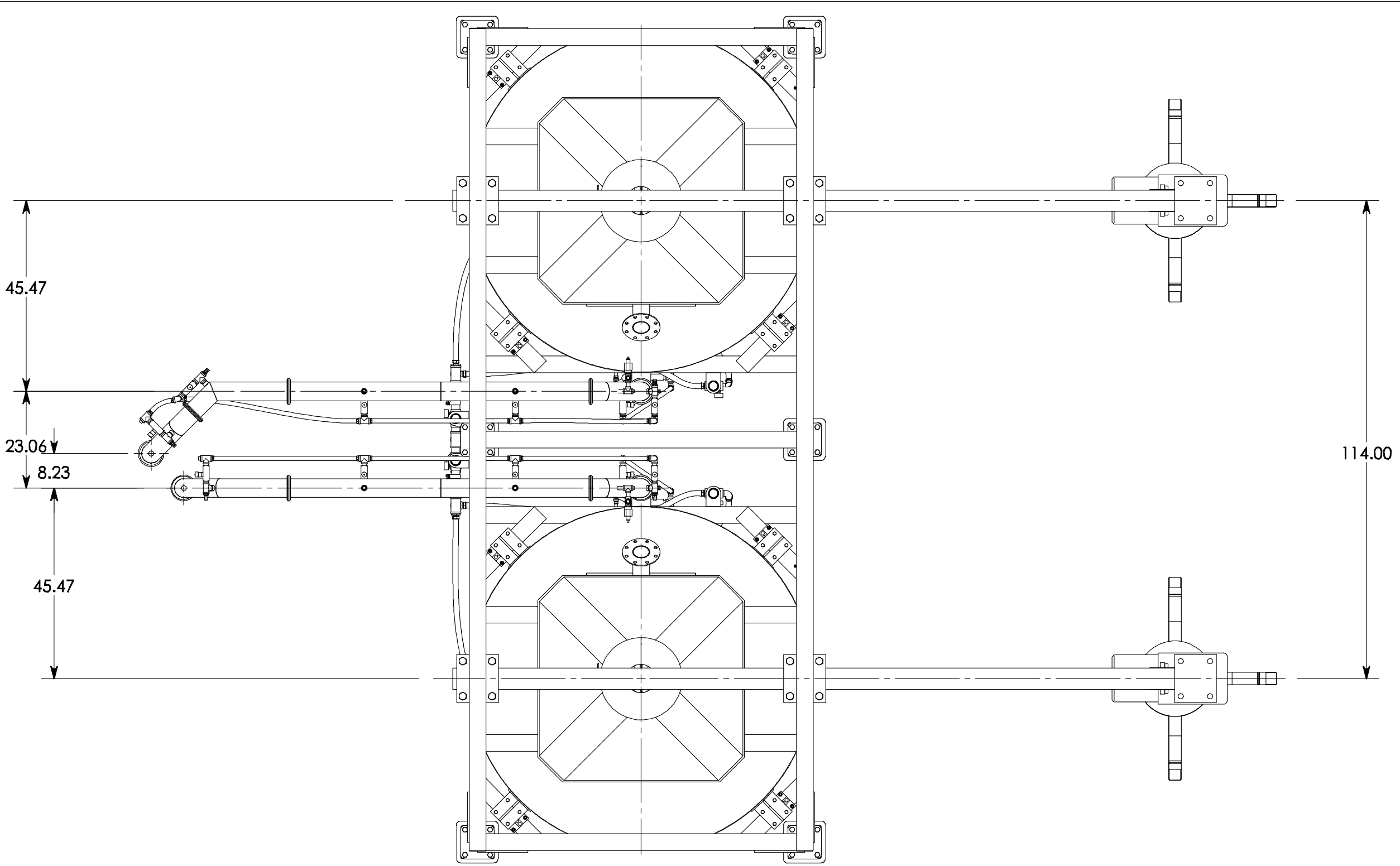


ITEM NO.	QTY.	PART NO.
1	1	Frame - bottom section - weldment (15360)
2	1	Frame - middle section - weldment (15360)
3	1	Frame - top section - weldment (15360)
7	2	Trolley rail assembly
11	2	48.25 vibratory pan 20 dia. collar
18	8	Load cell, series RL1800, 250-5000 lbs
23	2	Bulk bag access hopper with extended, flanged vent
24	2	Chain hoist (15360)
25	2	48 sq. x 10 low profile lift bracket
27	1	Assembly, BTS rotary valve - with drive (15360)
28	1	Stinger assembly (15360)
29	1	Assembly, BTS rotary valve, right side (15360)
30	1	Stinger assembly, right side (15360)



GENERAL TOLERANCES	
UNLESS OTHERWISE SPECIFIED THE FOLLOWING SHALL APPLY	
MACHINING	.004" .02 .004" .005 ANGLE .50"
SURFACE ROUGHNESS HEIGHT 63 MICRONS OR LESS	
FABRICATION	UNDER 6 TO 24 .24 TO 60 OVER 60
	±.06 ±.12 ±.19 ±.25
UNLESS OTHERWISE SPECIFIED DIMENSIONS ARE IN INCHES	

3			
2			
1	GENERAL REVISION		09/07/04 AEB
REV. NO.	DESCRIPTION	DATE	BY
REVISIONS			
CUSTOMER MAB Paints			
CUST. NO. 1388183			
YOUNG ORDER NO. 15360			
TITLE			
GENERAL ARRANGEMENT: BULG BAG UNLOADING STATION WITH DUAL WEIGH HOPPERS, STINGER FEEDERS AND RIGHT ANGLE STINGERS			
THE YOUNG INDUSTRIES, INC. MINCY, PENNSYLVANIA 17756 TELEPHONE: 570-546-8165			
Drawn By	AEB	SCALE	1:24
CHECKED BY		DATE	07/28/04
DRAWING NUMBER	D-20217-00.01		