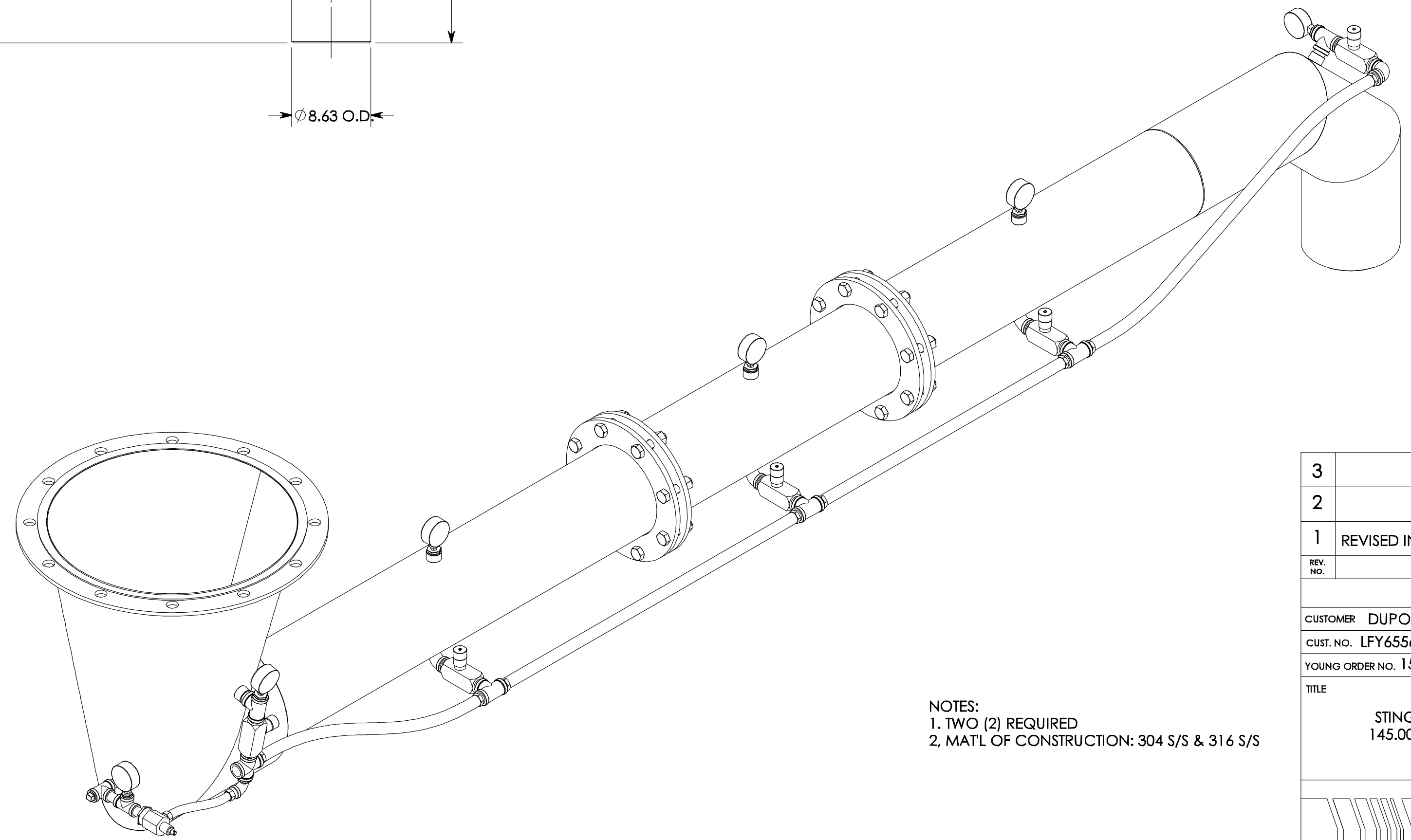


DETAIL A  
SCALE 1 : 4



NOTES:  
1, TWO (2) REQUIRED  
2, MATL OF CONSTRUCTION: 304 S/S & 316 S/S

ITEM NO.	QTY.	PART NO.
1	1	Stinger inlet, size 12x6, modular - weldment (15366)
2	1	Stinger section, size 6, single, modular (15366)
3	1	Stinger discharge elbow, size 6, modular - weldment (15366)
4	3	Rego flow valve assembly - straight section (15366)
5	1	Rego flow valve assembly - elbow end section (15366)
6	1	Flow nozzle assembly (15366)
9	1	Flow valve, size .75, Rego, TRU Micro, TMF series, brass
12	1	Elbow, pipe, street, 90°, .50" NPT, 150#, galvanized
15	1	Hose, .75 I.D. x 35.38 lg., 250# WP (des164)
16	1	Hose, .75 I.D. x 29.38 lg., 250# WP (des164)
17	1	Hose, .75 I.D. x 32.00 lg., 250# WP (15366)
18	1	Hose, .75 I.D. x 30.75 lg., 250# WP (15366)
19	1	Hose, .50 I.D. x 9.88 lg., 250# WP (15366)
20	5	Bushing and Pressure gauge
22	1	Pressure gauge, 2.50 dia., .25 NPT connection

REV. NO.	DESCRIPTION	DATE	BY
3			
2			
1	REVISED INLET	06/29/04	AEB

REVISIONS

CUSTOMER: DUPONT SURFACES  
CUST. NO. LFY655648  
YOUNG ORDER NO. 15366

TITLE: ASSEMBLY: STINGER UNLOADER, SIZE 12 X 6, 145.00" LONG, MODULAR DESIGN

**THE YOUNG INDUSTRIES, INC.**  
MUNICIPALITY, PENNSYLVANIA 17756  
TELEPHONE: 717-546-3165

GENERAL TOLERANCES	
UNLESS OTHERWISE SPECIFIED THE FOLLOWING SHALL APPLY	
MACHINING - .0015	ANGLE= .50°
SURFACE ROUGHNESS HEIGHT 63 MICROINCHES OR LESS	
FABRICATION - UNDER 6	6 TO 24
24 TO 60	OVER 60
± .06	± .12 ± .19 ± .25
UNLESS OTHERWISE SPECIFIED DIMENSIONS ARE IN INCHES	

Drawn By: AEB  
Checked By: AEB  
Drawing Number: D-20211-01.01

SCALE: 1:10  
DATE: 06/18/04